

ARE ALL TESLA DRIVERS SOCIOPATHIC DRUNKS?

Allegedly passed out drunk on Bay Bridge, Tesla driver claims car was on 'autopilot'

By [Alyssa Pereira](#), SFGATE

17

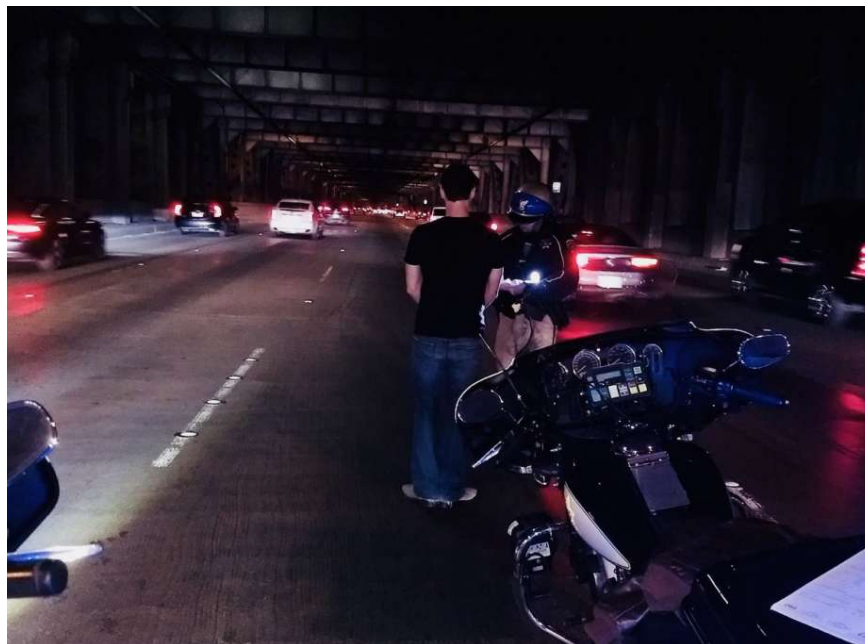



Photo: CHP San Francisco

A driver of a Tesla was arrested on the Bay Bridge Thursday night.



**MORNING REPORT
DAILY NEWSLETTER**
Everything you need to know to
start your day

You agree to our [Terms of Use](#). Your
information will be used as described in
our [Privacy Policy](#).

SIGN UP

"Autopilot" should not be conflated to "self-driving," as one allegedly inebriated Tesla driver found out after failing to cross the Bay Bridge last Saturday evening.

The man had apparently passed out in the stopped car while stuck in the flow of busy bridge traffic at 5:30 p.m. that day, according to the California Highway Patrol. When he was awoken, he ostensibly attempted to reassure arresting CHP officers onsite that the car

ARE ALL TESLA DRIVERS SOCIOPATHIC DRUNKS?

was "on autopilot."

Luckily, CHP was onsite immediately. "It's pretty quick that we get those calls," Officer Vu Williams of the San Francisco CHP tells SFGATE. "We always have units patrolling the bridge."

According to the CHP, the man had a blood alcohol level of "at least twice" the legal limit. He was arrested and charged with suspicion of a DUI after being reported by drivers who saw him stopped in traffic.

When u pass out behind the wheel on the Bay Bridge with more than 2x legal alcohol BAC limit and are found by a CHP Motor. Driver explained Tesla had been set on autopilot. He was arrested and charged with suspicion of DUI. Car towed (no it didn't drive itself to the tow yard). pic.twitter.com/4NSRIOBRBL

— CHP San Francisco (@CHPSanFrancisco) January 19, 2018

RELATED: Suspected Tesla worker crashes Model 3, arrested for DUI

Tesla has **long advised** autopilot drivers to maintain consciousness while driving and to keep their hands on the steering wheel should anything go wrong.

In response to this instance, a spokesperson for the company tells SFGATE that "autopilot is intended for use only with a fully attentive driver."

THOUSANDS OF TESLA OWNERS HAVE HAD ALCOHOL ISSUES AND ARRESTS!